

U:GENIUS

Gel imaging at a touch



U:GENIUS

Simply Genius. Designed to make your gel imaging simple, quick and easy. No set up, no external computer - just a complete imaging system for all your 1D needs.

A smooth and intuitive touch screen ensures that anyone can use a U:Genius with virtually no previous experience of gel imaging.

U:Genius - from switch-on to perfect image at a touch.



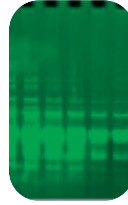
U:Genius applications

Use the large colour touch screen to navigate your way through the functions of U:Genius. The icon driven menu is both intuitive and easily understood. All functions from image capture, manipulation, printing to archiving are at the touch of a button.



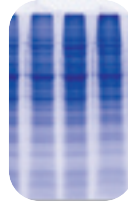
DNA

With a U:Genius you can use the UV transilluminator to capture images of DNA gels stained with Ethidium Bromide



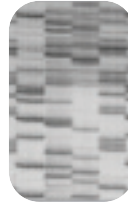
Blue light applications

The blue light converter allows you to view some fluorescent stains with better clarity and with less gel damage



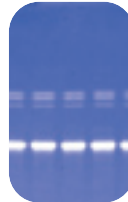
Visible light applications

With the transmitted visible light or using the epi white light facility, a U:Genius can be used to view gels which have been stained with silver stain and Coomassie blue. You can also view tissues, slides and films



AutoRads

The U:Genius features a mega resolution camera which is ideal for capturing images requiring high detail. This is especially true when looking for separation between bands and spots. Capturing high quality images of Autorads is one of the strengths of the U:Genius



Other fluorescence applications

Another option includes the use of transmitted blue light. This lighting option makes U:Genius suitable for generating images of a wide range of fluorescent samples

Examples: GFP, SYBR®Green, SYBR Gold, SYBR Safe, SYPRO Ruby, Safe View, Flamingo, Pro-Q Diamond, Pro-Q Emerald, Fluorescein, Rhodamine Red™, Texas Red®, Deep Purple™ and others



Spot blots

Capturing and analysing spot blots is another very simple application for U:Genius



LIVE IMAGE

capture the image you see with a single touch



AUTO EXPOSURE

automatic exposure control lets U:Genius give you the perfect image



EXPOSURE CONTROL

manually set the exposure settings



SATURATION DETECTION

see which areas of the image are over exposed



NEUTRAL FIELDING

correction of any uneven background illumination



EDR

Syngene's patented extended dynamic range function



SAVE/LOAD

save or load image to USB memory stick, internal hard drive or use the networking capabilities



ZOOM

zoom image to view areas in greater detail



PRINT

send image to attached printer



ROTATE

rotate image by degrees - no more "skewed" images



SHARPEN

add sharpening to enhance band edges



SMOOTH

even out background noise when viewing



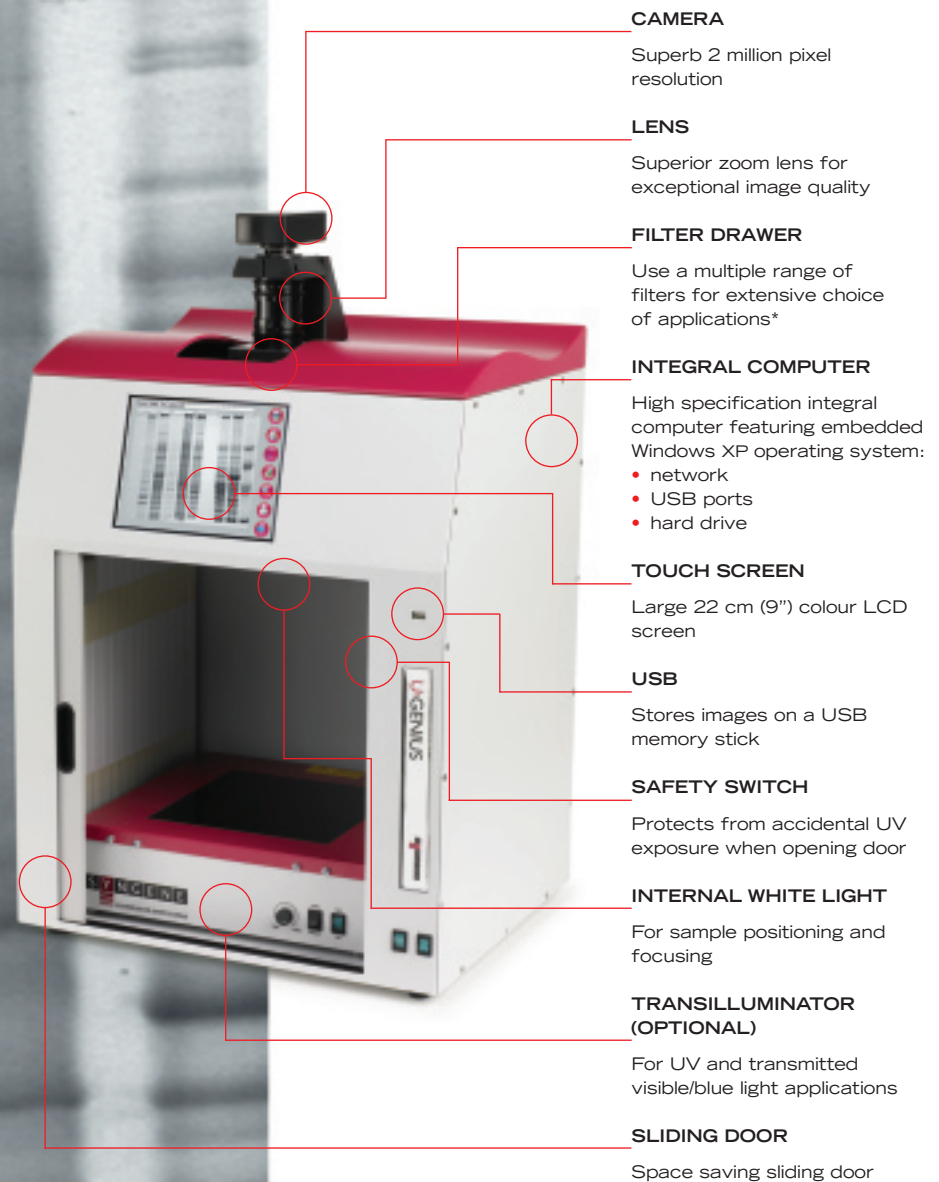
INVERT

view the reverse image



ANNOTATION

add annotation (text, shapes, lines) to images



CAMERA

Superb 2 million pixel resolution

LENS

Superior zoom lens for exceptional image quality

FILTER DRAWER

Use a multiple range of filters for extensive choice of applications*

INTEGRAL COMPUTER

High specification integral computer featuring embedded Windows XP operating system:

- network
- USB ports
- hard drive

TOUCH SCREEN

Large 22 cm (9") colour LCD screen

USB

Stores images on a USB memory stick

SAFETY SWITCH

Protects from accidental UV exposure when opening door

INTERNAL WHITE LIGHT

For sample positioning and focusing

TRANSILLUMINATOR (OPTIONAL)

For UV and transmitted visible/blue light applications

SLIDING DOOR

Space saving sliding door

U:GENIUS

Simply Genius. Designed to make your gel imaging simple, quick and easy. No set up, no external computer - just a complete imaging system for all your 1D needs.

U:Genius specification

Camera	16 bit EDR
CCD	1/2 inch
CCD resolution	2m pixels
Zoom	8 - 48 manual zoom
Lens	F1.2
Detection sensitivity	0.01 ng
Max gel size	24 x 30 cm
Data types	BMP, TIFF, JPEG
Image storage	USB, hard disk and network
Image enhancements	Sharpen, smooth, rotate, invert, annotate, zoom

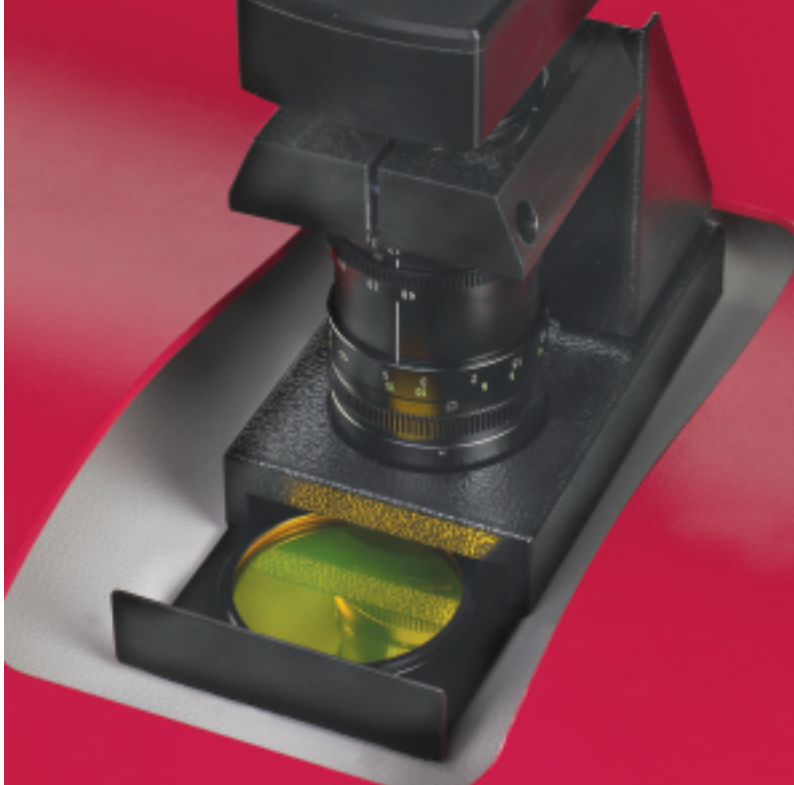


Ordering details/options

UGEN	U:Genius system
------	-----------------

Options

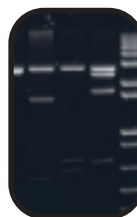
GVM20D	Transilluminator Wavelength 302nm Filter area 20 x 20cm
GVM30D	Transilluminator Wavelength 302nm Filter area 20 x 30cm
GVM25/30D	Transilluminator Wavelength 302nm Filter area 25 x 30cm
GVL20D	Transilluminator Wavelength 302/365nm Filter area 20 x 20cm
GVL30D	Transilluminator Wavelength 302/365nm Filter area 20 x 30cm
GVL25/30D	Transilluminator Wavelength 302/365nm Filter area 25 x 30cm
CONVERTBLUE	UV-to blue light converter Area 25 x 30cm
CONVERT-NOVAGLO2	UV-to-visible light converter Area 30.5 x 33cm
FILTSG-58	SYBR Gold filter
FILTSP-58	Short Pass filter
FILTLP-58	Long Pass filter
P93DW	Thermal Printer Digital, USB Supplied with USB cable
K65HM	Thermal Paper Matt
K91HG	Thermal Paper Gloss



U:Genius features & benefits

Features

Compact darkroom with sliding door - only 46(w) x 39(d) x 63(h) cms	Small footprint taking up minimal laboratory bench space
Can use a range of transilluminators (Syngene range starts at 20 x 20 cm)	Versatile - not restricted to using only small gels
No compromise on resolution - 2 million pixels	Exceptional resolution for high quality images
Easy to access filter drawer accepts interchangeable filters	Capable of viewing a wide range of different fluorophores
Integral computer	Full networking capability, USB ports and an internal hard disk for image storage
Large colour touch screen	Full intuitive touch control of all functions with large image view
Image enhancements and annotations	Total control over image quality
Save images in TIFF, BMP or JPEG format	Simple to download to any PC or Mac



These are just some of the applications that can be used with U:Genius. The Syngene Applications & Support Department is always ready to discuss your particular application samples and how they can be imaged using the U:Genius. The Syngene website contains further technical notes and FAQ's covering the use of all Syngene gel documentation systems. Further details can be found at www.syngene.com